



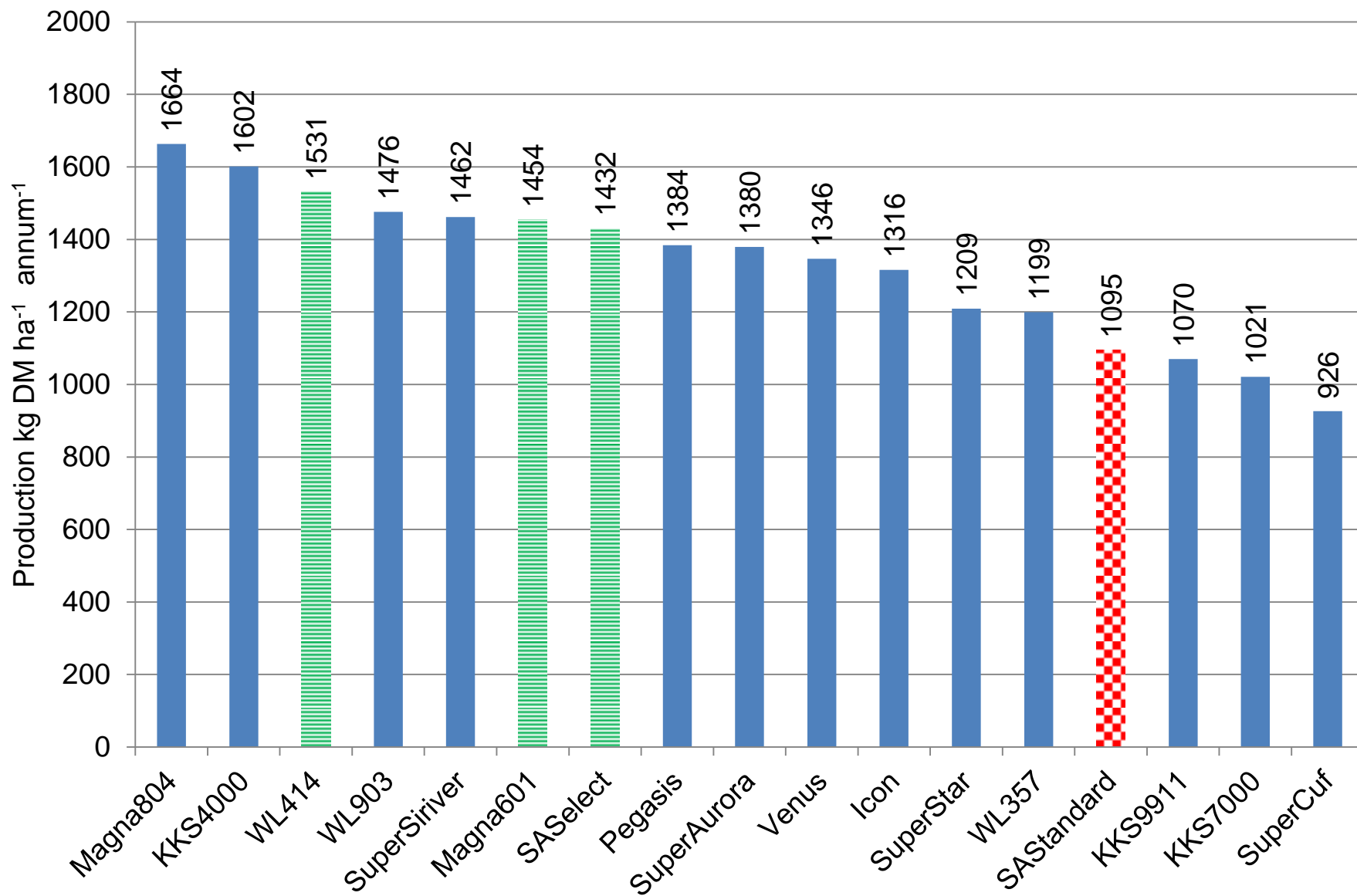
Lusernnavorsing

J M van Heerden
ARC-Animal Production

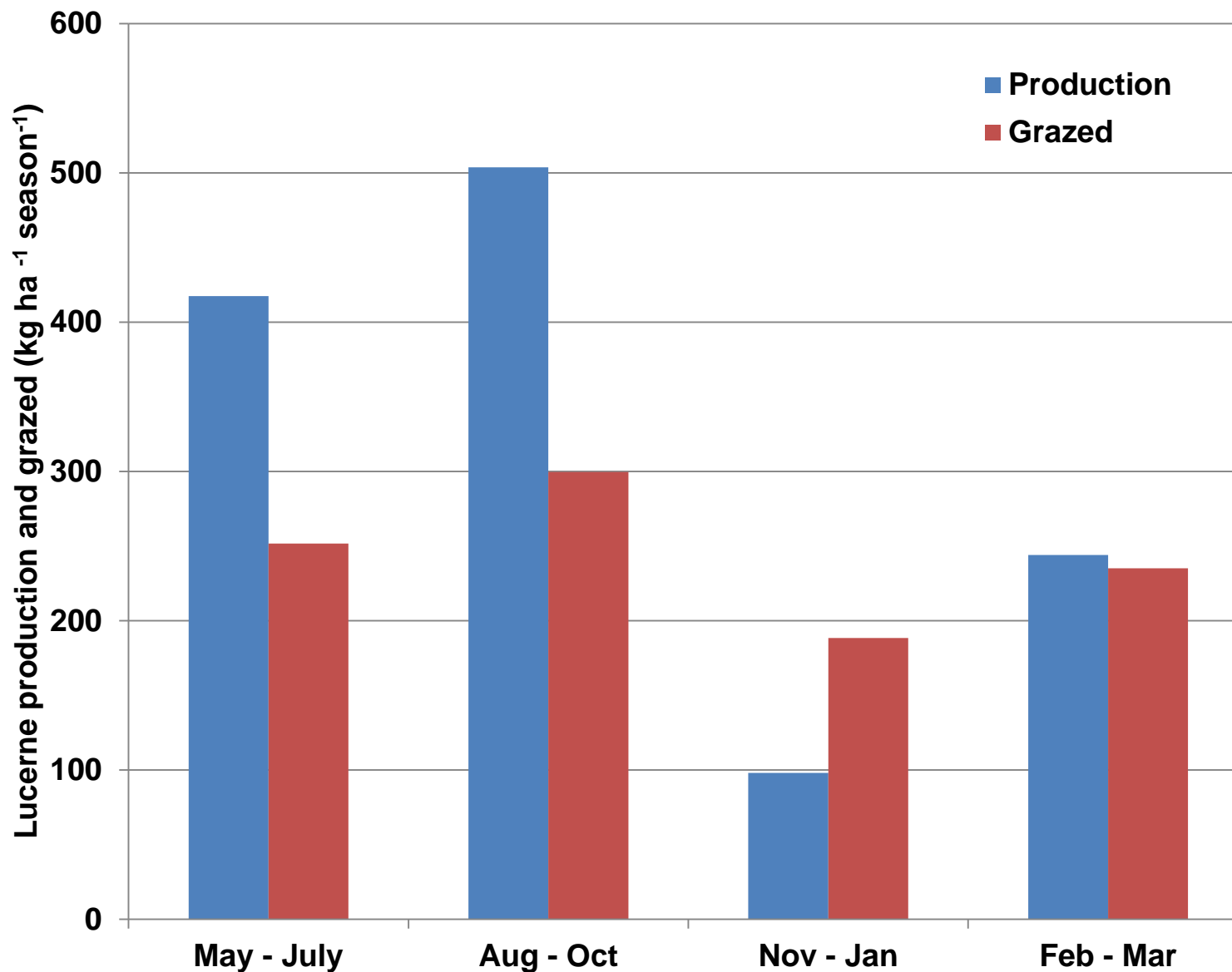
Lucerne cultivar
evaluation at Roodebloem
2009 to 2014



Production of 17 grazed lucerne cultivars over five seasons at Roodebloem



Lucerne production and grazing intake during four seasons over five years at Roodebloem

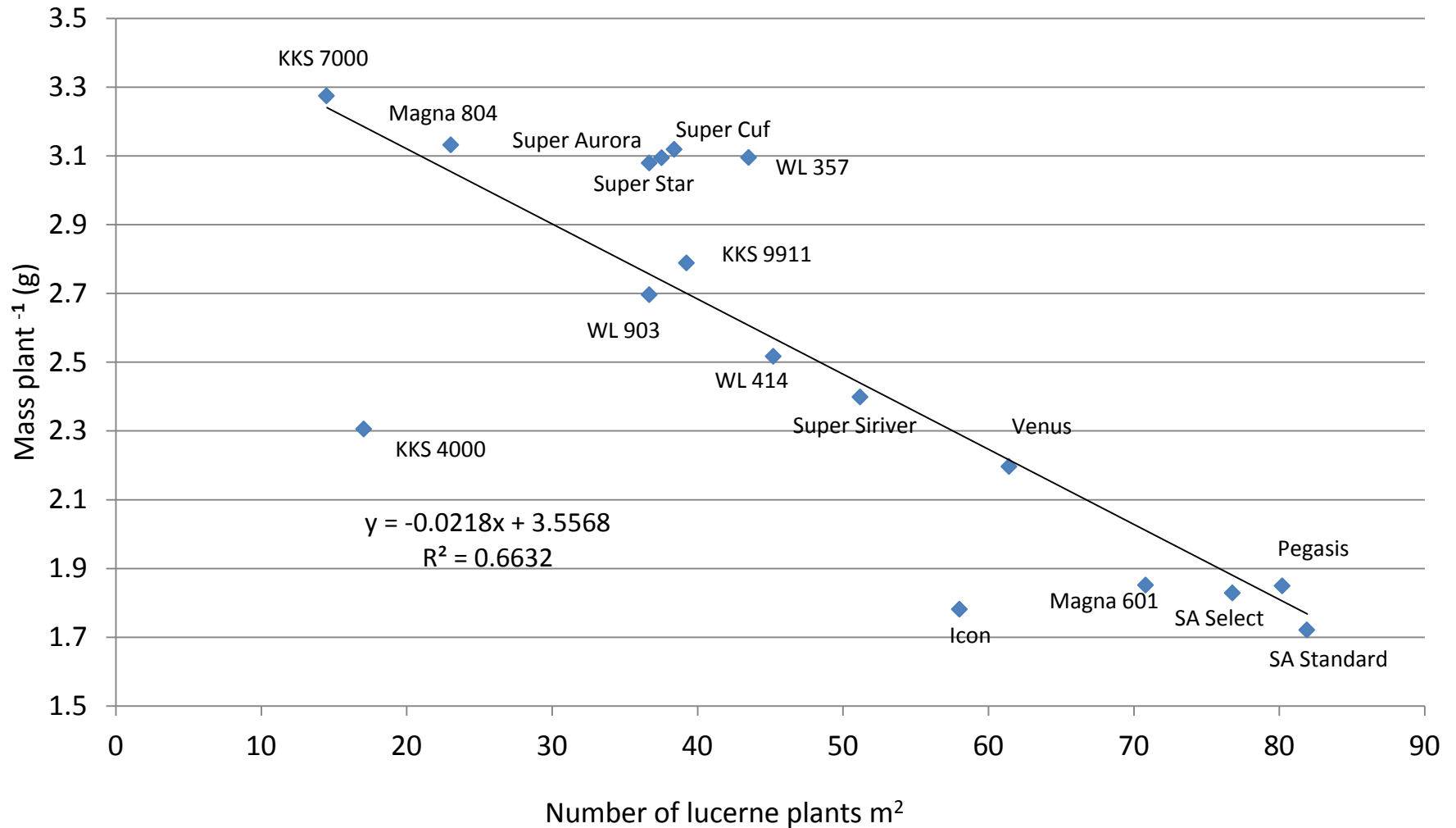


Number of lucerne plants
 m^{-2}

Table 6. Number of plants m⁻² for each cultivar over two seasons 2012 and 2013 at Roodebloem, Caledon

Kultivar	Mean	
Pegasis	66.2	a
SA Standaard	65.8	a
SA Select	65.0	a
Magna 601	58.8	ab
Venus	49.8	abc
Icon	41.7	bcd
Super Siriver	40.2	bcde
WL 414	39.7	bcde
Super Aurora	37.5	bcdef
WL 357	35.5	cdef
WL 903	33.5	cdef
Magna 804	33.3	cdef
KKS 9911	30.7	cdef
Super Star	30.3	cdef
KKS 4000	22.3	def
KKS 7000	20.0	ef
Super Cuf	17.2	f

Relationship between number of lucerne plants (# m²) and the mass per lucerne plant (gm) for 17 lucerne cultivars at Roodebloem after four seasons



Number of plants m⁻² per season over cultivars at Roodebloem, Caledon

Date	Mean	
2012	47.26	a
2013	34.22	b

Mass per lucerne plant (g plant⁻¹) over cultivars in successive years at Roodebloem

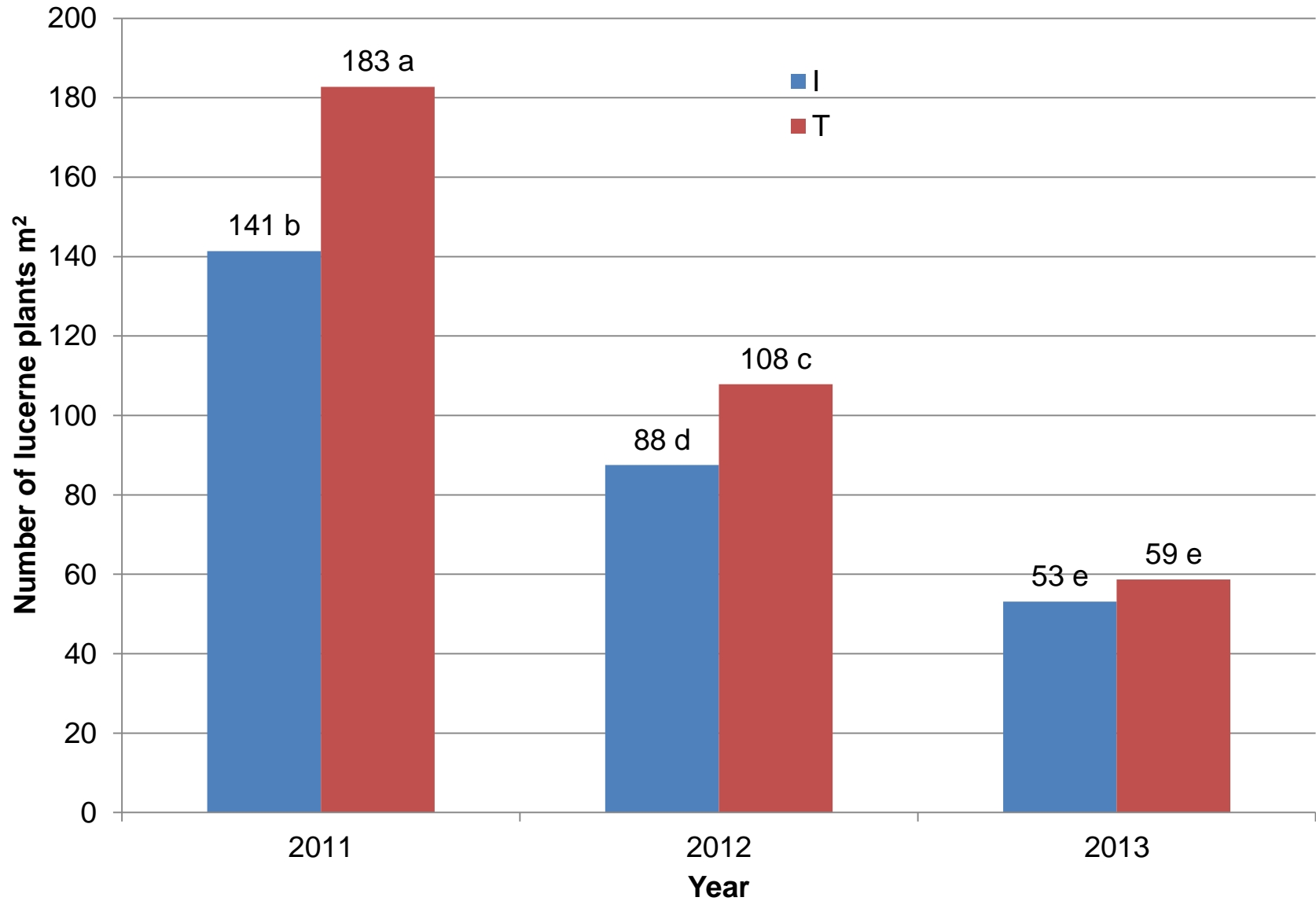
Date	Mean	
2012	2.51	b
2013	4.22	a

Influence of seed
treatment with cruiser
compared to inoculated
seed only

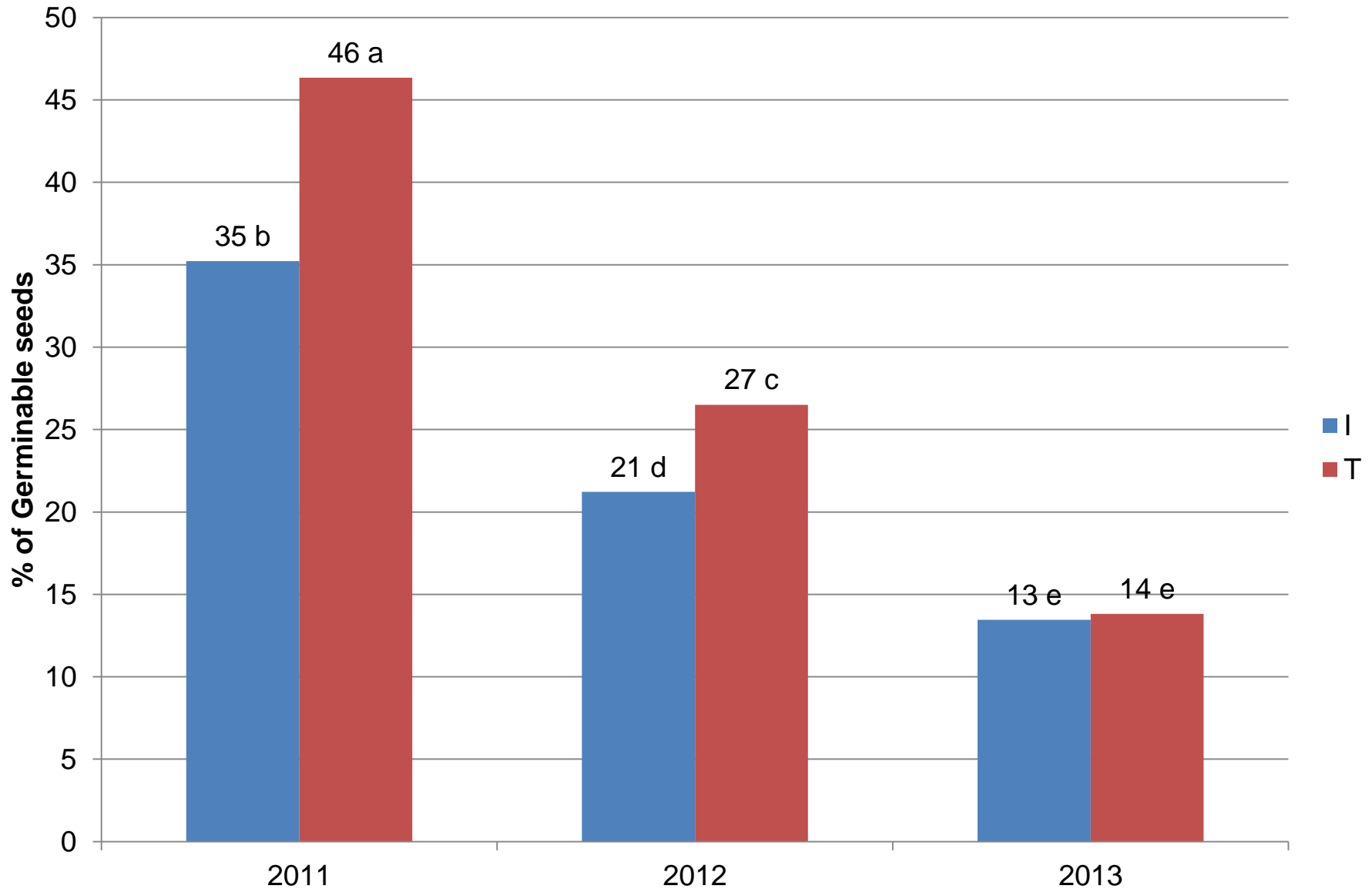
Cultivar SA Select
At twenty seeding rates
0 to 20 kg ha⁻¹

Over seeding rates

Influence of seed treatment on the number of lucerne plants established in 2011 during consecutive seasons



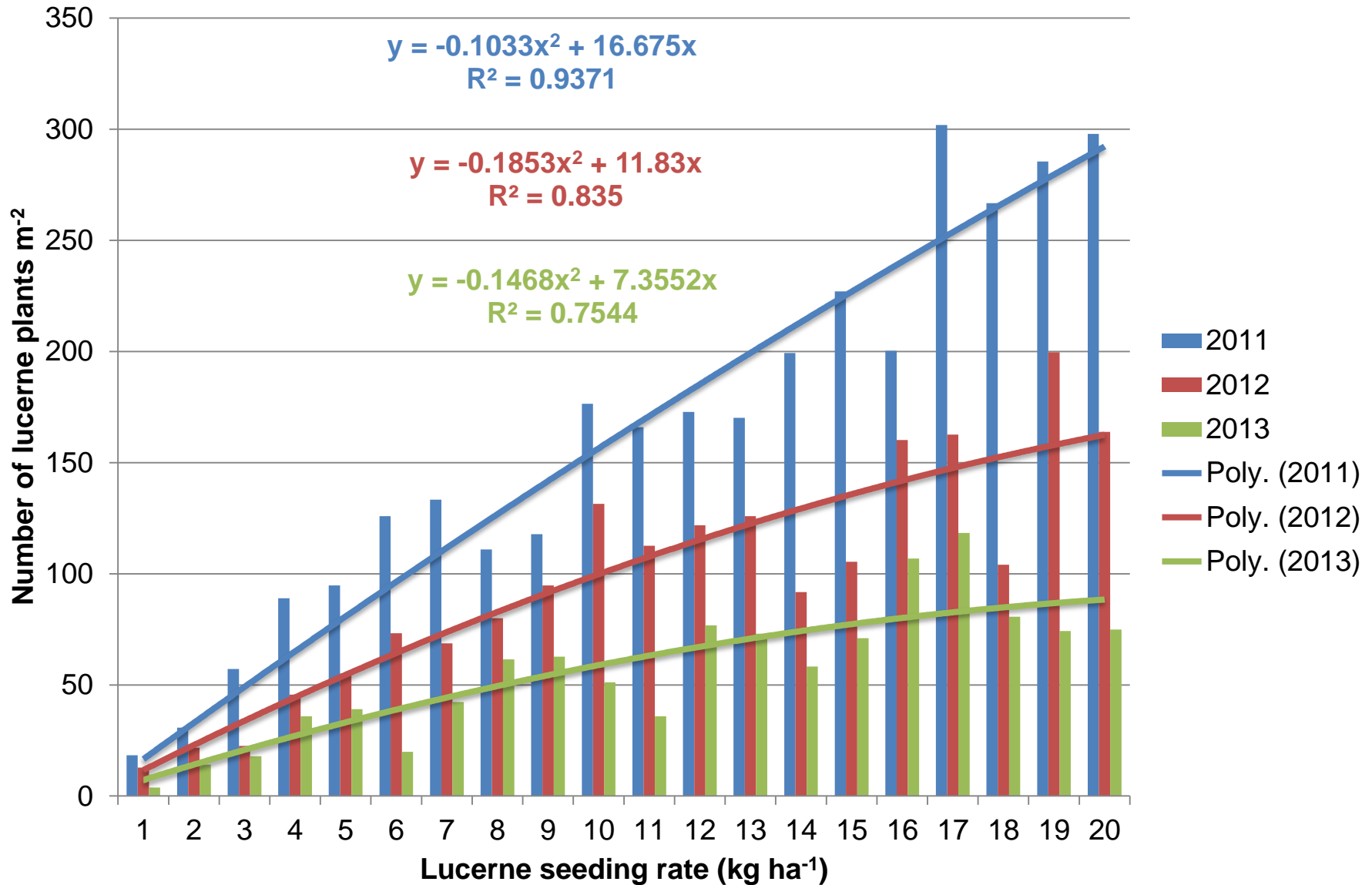
Influence of seed treatment on the % of germinable lucerne seeds, established in 2011, during consecutive seasons



Effect of seeding rate

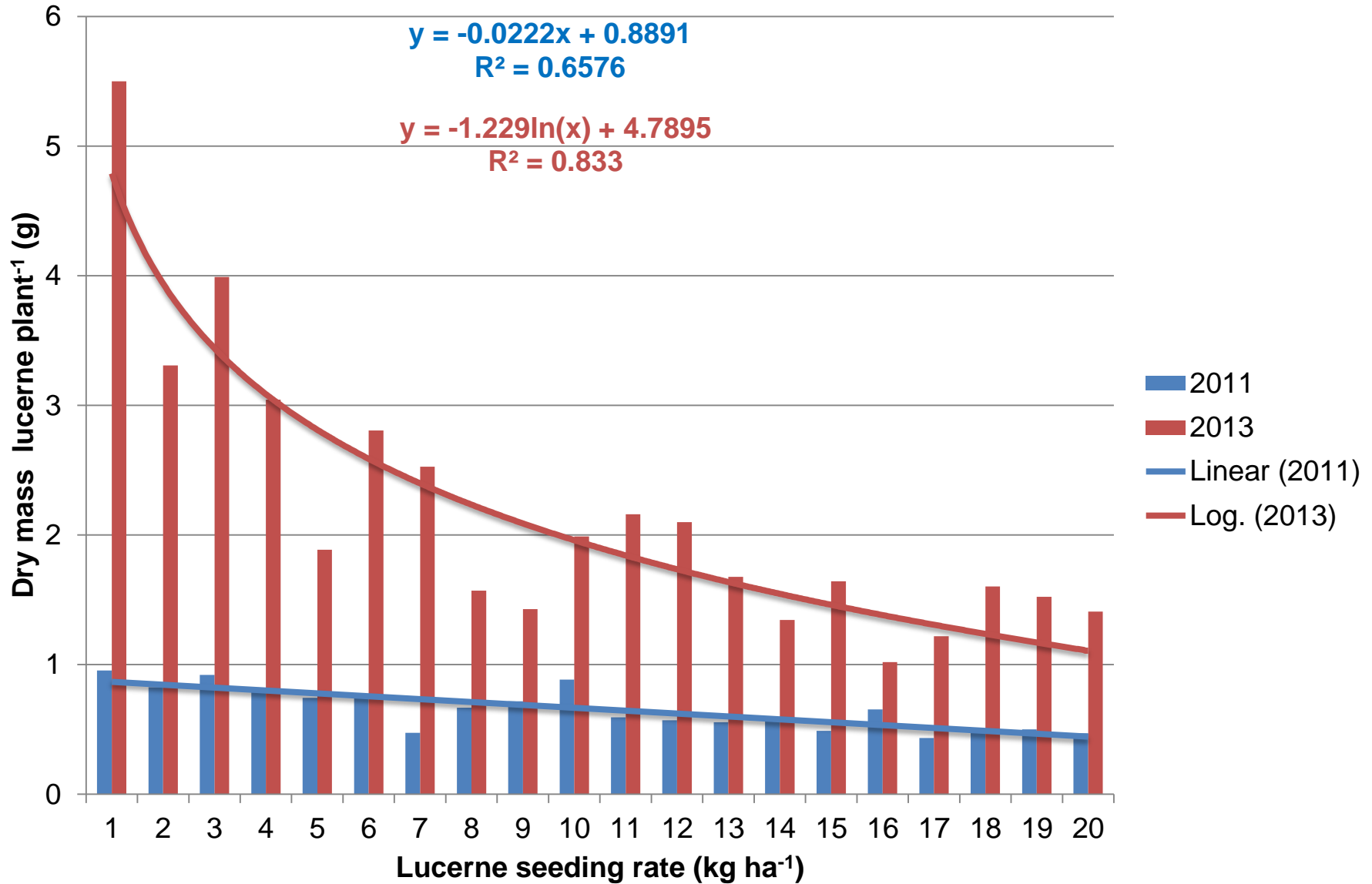
Number of lucerne
plants

Influence of seeding rate on the number of lucerne plants m⁻² during three consecutive seasons

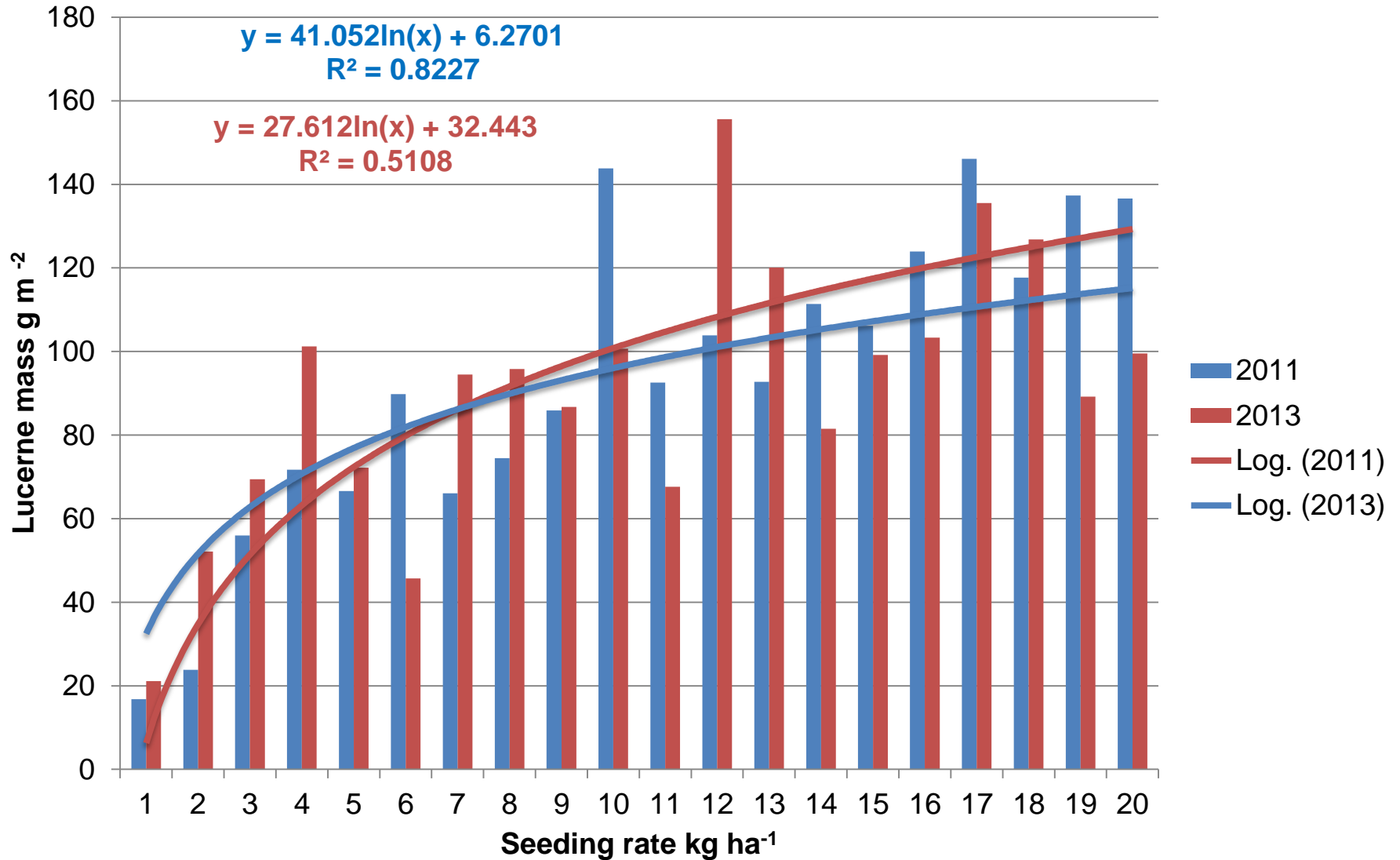


Lucerne dry mass

Influence of seeding rate on the dry mass per lucerne plant during two consecutive seasons (2011 and 2013)



Influence of seeding rate on the total dry mass (g m^{-2}) of lucerne, established in 2011, during two consecutive seasons (2011 and 2013)







**RED MEAT
RESEARCH AND
DEVELOPMENT
TRUST OF SA
(RMRDT)**



Relationship between the number of weed and legume seedlings

